

Make your own Compliance Schedule

peCHECK

Cost Effective Performance Evaluation Standards
for Routine Analysis Compliance Testing

SCP SCIENCE introduces a new family of performance evaluation control standards for MINERALS, NUTRIENTS and SOLIDS in water/wastewater

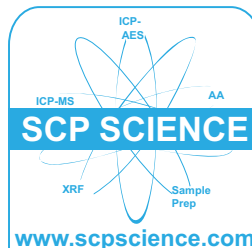
- save up to 50% compared to other suppliers		- allows an increased monitoring schedule
- wide mouth bottles		- easy to transfer, easy to use
- each lot manufactured in large volume		- long term use of the same control limits
- 3 levels of concentration available for each standard		- customize standards to your specific laboratory needs
- prepared in our ISO 9002 certified facility		- complete logs of manufacturing process
- certified via round-robin study involving over 25 laboratories		- independent verification removes chance of bias

See other side for a full listing of parameters, certified values & item numbers...

peCHECK is the latest member of the SCP SCIENCE Total Quality Package which includes **PlasmaTEST ICP-AES** Spectrometer Kit, **MAT** Certified Reference Materials, and **PlasmaCAL** calibration standards. For more information describing these or other **SCP SCIENCE** products, complete and Fax this form to **800-253-5549**

Name: _____
 Title: _____
 Company: _____
 Address: _____
 City: _____
 State/Prov.: _____ Zip/Postal Code: _____
 Phone: _____ Fax: _____
 E-mail: _____

- peCHECK for Analysis Control
- PlasmaTEST for Instrument Control
- EnviroMAT for Process Control
- PlasmaCAL Calibration Standards



Sample Prep
 ICP-AES & MS
 AA
 XRF
 Calibration Standards
 Certified Reference Materials

PlasmaTEST ICP-AES



The only product to provide **multi-level** quality control checks **specifically** for ICP-AES instruments

Monitor & log 7 important instrument performance parameters

USA
 Tel.: (800) 361-6820
 Fax: (800) 253-5549

Canada / International
 Tel.: (800) 361-6820 / (514) 457-0701
 Fax: (800) 253-5549 / (514) 457-4499

Europe
 Tel.: +33 (0)1 69 18 71 17
 Fax: +33 (0)1 60 92 05 67

Nutrients

Level 1 Nutrients			
Parameter	Unit	Consensus Value	Confidence Interval
Ammonia (as N)	mg/l	0.97	0.91 - 1.03
Nitrate (as N)	mg/l	1.40	1.34 - 1.45
O-Phosphate (as P)	mg/l	0.74	0.69 - 0.80
Total Kjeldahl Nitrogen	mg/l	1.04	0.93 - 1.16
Total Phosphorus (as P)	mg/l	0.79	0.74 - 0.84
Level 2 Nutrients			
Parameter	Unit	Consensus Value	Confidence Interval
Ammonia (as N)	mg/l	8.59	7.98 - 9.21
Nitrate (as N)	mg/l	13.3	12.9 - 13.7
O-Phosphate (as P)	mg/l	4.42	4.17 - 4.66
Total Kjeldahl Nitrogen	mg/l	20.2	19.2 - 21.2
Total Phosphorus (as P)	mg/l	4.64	4.31 - 4.98
Level 3 Nutrients			
Parameter	Unit	Consensus Value	Confidence Interval
Ammonia (as N)	mg/l	14.7	14.2 - 15.2
Nitrate (as N)	mg/l	26.5	25.6 - 27.3
O-Phosphate (as P)	mg/l	9.33	9.11 - 9.55
Total Kjeldahl Nitrogen	mg/l	45.3	42.8 - 47.8
Total Phosphorus (as P)	mg/l	9.76	8.75 - 10.77

Solids

Level 1 Solids			
Parameter	Unit	Consensus Value	Confidence Interval
Suspended Solids	mg/l	238	235 - 242
Dissolved Solids	mg/l	33.0	18.7 - 47.3
Total Solids	mg/l	254	242 - 267
Level 2 Solids			
Parameter	Unit	Consensus Value	Confidence Interval
Suspended Solids	mg/l	380	374 - 385
Dissolved Solids	mg/l	44.8	21.3 - 68.3
Total Solids	mg/l	400	380 - 419
Level 3 Solids			
Parameter	Unit	Consensus Value	Confidence Interval
Suspended Solids	mg/l	1928	1895 - 1961
Dissolved Solids	mg/l	46.0	25.3 - 66.8
Total Solids	mg/l	1970	1942 - 1999

Minerals

Level 1 Minerals			
Parameter	Unit	Consensus Value	Confidence Interval
Conductivity	µmhos/cm	188	183 - 193
Total Hardness (CaCO ₃)	mg/l	11.6	11.3 - 12.0
Total Dissolved Solids	mg/l	102	91 - 112
Calcium (Ca)	mg/l	2.62	2.50 - 2.75
Potassium (K)	mg/l	8.77	8.46 - 9.08
Magnesium (Mg)	mg/l	1.22	1.16 - 1.27
Sodium (Na)	mg/l	18.1	17.4 - 18.7
Chloride (Cl)	mg/l	19.7	19.1 - 20.2
Fluoride (F)	mg/l	0.50	0.48 - 0.53
Sulfate (SO ₄)	mg/l	8.41	7.90 - 8.92
Level 2 Minerals			
Parameter	Unit	Consensus Value	Confidence Interval
Conductivity	µmhos/cm	1980	1915 - 2044
Total Hardness (CaCO ₃)	mg/l	221	215 - 227
Total Dissolved Solids	mg/l	998	949 - 1048
Calcium (Ca)	mg/l	62.0	59.3 - 64.6
Potassium (K)	mg/l	164	155 - 172
Magnesium (Mg)	mg/l	15.3	14.8 - 15.8
Sodium (Na)	mg/l	90.9	88.2 - 93.6
Chloride (Cl)	mg/l	95.7	92.2 - 99.1
Fluoride (F)	mg/l	4.20	4.03 - 4.37
Sulfate (SO ₄)	mg/l	150	144 - 156
Level 3 Minerals			
Parameter	Unit	Consensus Value	Confidence Interval
Conductivity	µmhos/cm	5803	5603 - 6002
Total Hardness (CaCO ₃)	mg/l	531	520 - 542
Total Dissolved Solids	mg/l	3051	2990 - 3111
Calcium (Ca)	mg/l	136	132 - 140
Potassium (K)	mg/l	466	434 - 497
Magnesium (Mg)	mg/l	45.4	44.9 - 46.0
Sodium (Na)	mg/l	342	331 - 353
Chloride (Cl)	mg/l	430	420 - 441
Fluoride (F)	mg/l	12.3	11.8 - 12.9
Sulfate (SO ₄)	mg/l	397	384 - 411