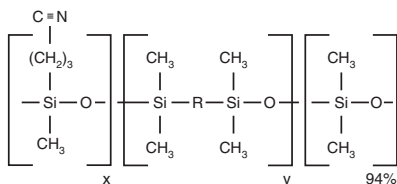


Rxi®-624Sil MS (G43) Structure



Similar to: (6%-cyanopropylphenyl)-methylpolysiloxane

similar phases

DB-624, VF-624ms, CP-Select 624 CB

Rxi®-624Sil MS Columns (fused silica)

(midpolarity Crossbond® phase)

- Low-bleed, high-thermal stability column—maximum temperatures up to 320 °C.
- Inert—excellent peak shape for a wide range of compounds.
- Selective—G43 phase highly selective for volatile organics and residual solvents, great choice for USP<467>.
- Manufactured for column-to-column reproducibility—well-suited for validated methods.

ID	df	temp. limits	20-Meter cat.#	30-Meter cat.#	60-Meter cat.#	75-Meter cat.#	105-Meter cat.#
0.18 mm	1.00 µm	-20 to 300/320 °C	13865				
0.25 mm	1.40 µm	-20 to 300/320 °C		13868	13869		
0.32 mm	1.80 µm	-20 to 300/320 °C		13870	13872		
0.53 mm	3.00 µm	-20 to 280/300 °C		13871	13873	13874	13875



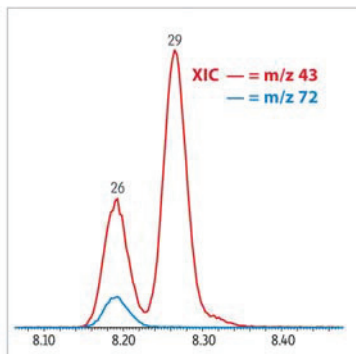
free literature

Rxi®-624Sil MS Columns: Exceptionally Inert, Low-Bleed Columns for Volatiles Analysis

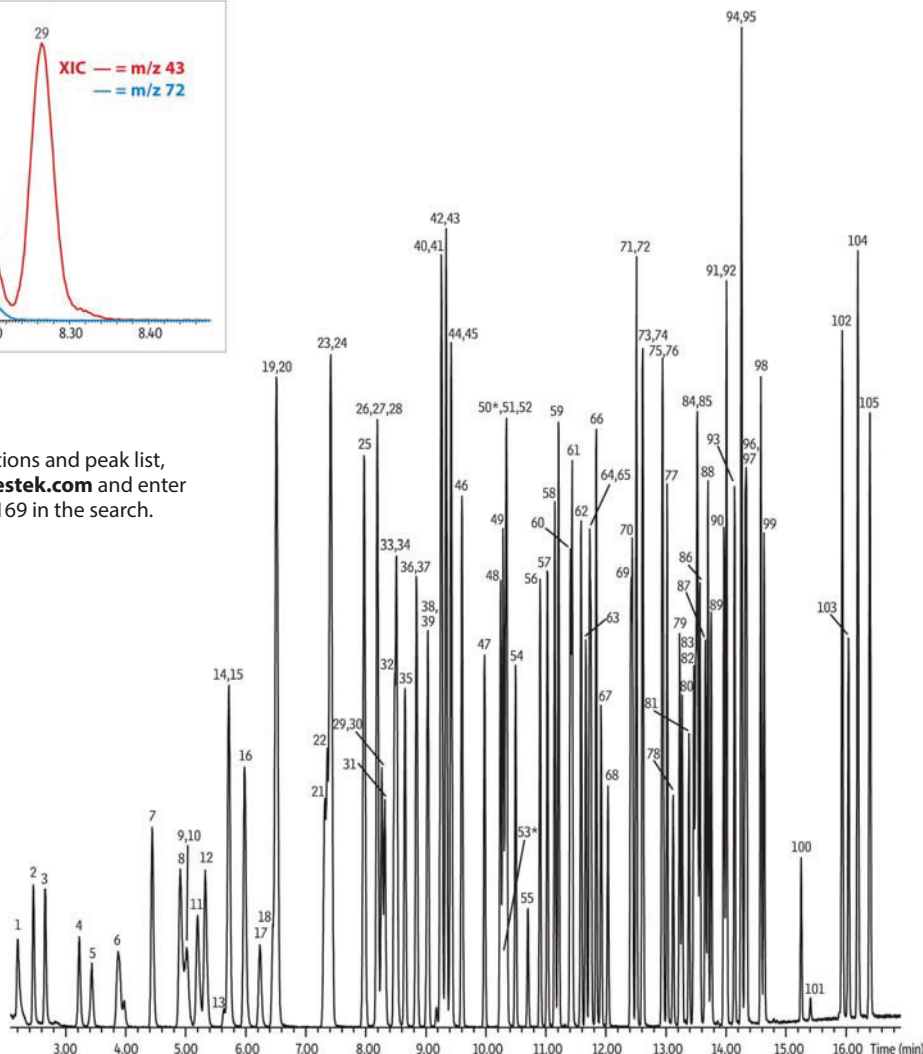
Download your free copy from www.restek.com

lit. cat.# GNBR1334A-UNV

Volatiles by EPA Method 8260 on Rxi®-624Sil MS (30 m, 0.25 mm ID, 1.40 µm)



For conditions and peak list, visit www.restek.com and enter GC_EV1169 in the search.



GC_EV1169