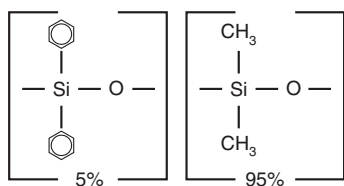


Rxi®-5ms Structure



Similar to: (5%-phenyl)-methylpolysiloxane

similar phases

HP-5ms SemiVolatiles, HP-5ms, HP-5msUI, DB-5, Ultra-2, CP-Sil 8 CB, ZB-5, ZB-5msi

free literature

Rxi® Columns

Lower Detection Limits with Ground-Breaking Column Technology

Download your free copy from

www.restek.comlit. cat.#
GNFL1173A

Rxi®-5ms Columns (fused silica)

(low-polarity phase; Crossbond® diphenyl dimethyl polysiloxane)

- General-purpose columns for semivolatiles, phenols, amines, residual solvents, drugs of abuse, pesticides, PCB congeners (e.g., Aroclor mixes), solvent impurities.
- Most inert column on the market.
- Tested and guaranteed for ultra-low bleed; improved signal-to-noise ratio for better sensitivity and mass spectral integrity.
- Temperature range: -60 °C to 330/350 °C.
- Equivalent to USP G27 and G36 phases.

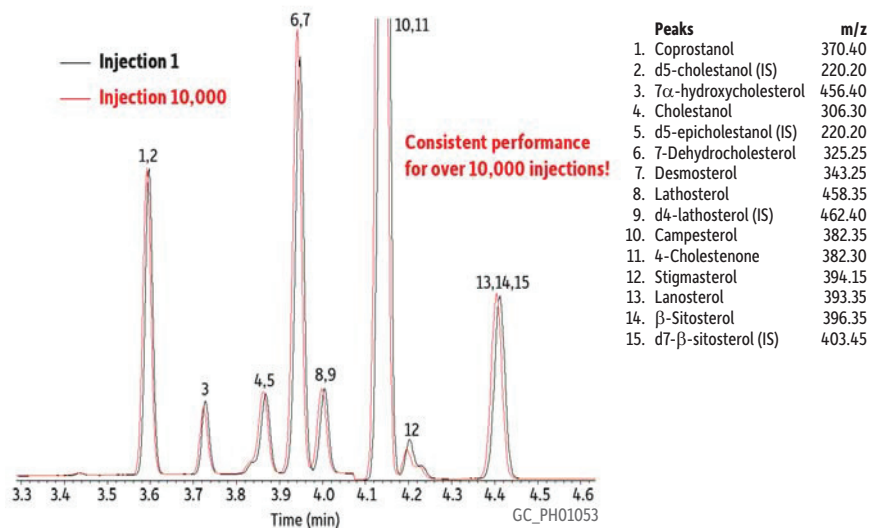
ID	df	temp. limits	15-Meter cat.#	30-Meter cat.#	60-Meter cat.#
0.25 mm	0.25 µm	-60 to 330/350 °C	13420	13423	13426
	0.40 µm	-60 to 330/350 °C		13481	
	0.50 µm	-60 to 330/350 °C	13435	13438	13441
	1.00 µm	-60 to 330/350 °C	13450	13453	13456
0.32 mm	0.25 µm	-60 to 330/350 °C	13421	13424	13427
	0.50 µm	-60 to 330/350 °C	13436	13439	13442
	1.00 µm	-60 to 330/350 °C	13451	13454	13457
0.53 mm	0.25 µm	-60 to 330/350 °C	13422	13425	
	0.50 µm	-60 to 330/350 °C	13437	13440	
	1.00 µm	-60 to 330/350 °C	13452	13455	
	1.50 µm	-60 to 330/350 °C	13467	13470	

ID	df	temp. limits	12-Meter cat.#	20-Meter cat.#	25-Meter cat.#	50-Meter cat.#
0.18 mm	0.18 µm	-60 to 330/350 °C		13402		
	0.30 µm	-60 to 330/350 °C		13409		
	0.36 µm	-60 to 330/350 °C		13411		
0.20 mm	0.33 µm	-60 to 330/350 °C	13497		13498	13499



Stringent quality testing ensures consistent performance, column to column and injection to injection.

Over 10,000 Injections of Lipidomics on Rxi®-5ms



Column: Rxi®-5ms, 30 m, 0.25 mm ID, 0.25 µm (cat.# 13423)
 Sample: Lipid plasma extract as trimethylsilyl derivatives
 Injection: 1 µL split (split ratio 10:1)
 Liner: 4 mm split liner gooseneck with wool
 Inj. Temp.: 310 °C
 Oven: 250 °C (hold 1 min) to 320 °C at 30 °C/min (hold 1.6 min)
 Carrier Gas: He, constant flow
 Flow Rate: 1.0 mL/min
 Detector: MS
 Mode: SIM
 Transfer Line Temp.: 330 °C
 Ionization Mode: EI