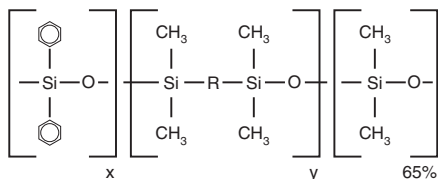


Rxi®-35Sil MS Structure



similar phases

DB-35ms, DB-35msUI, VF-35ms, MR2

Rxi®-35Sil MS Columns (fused silica)

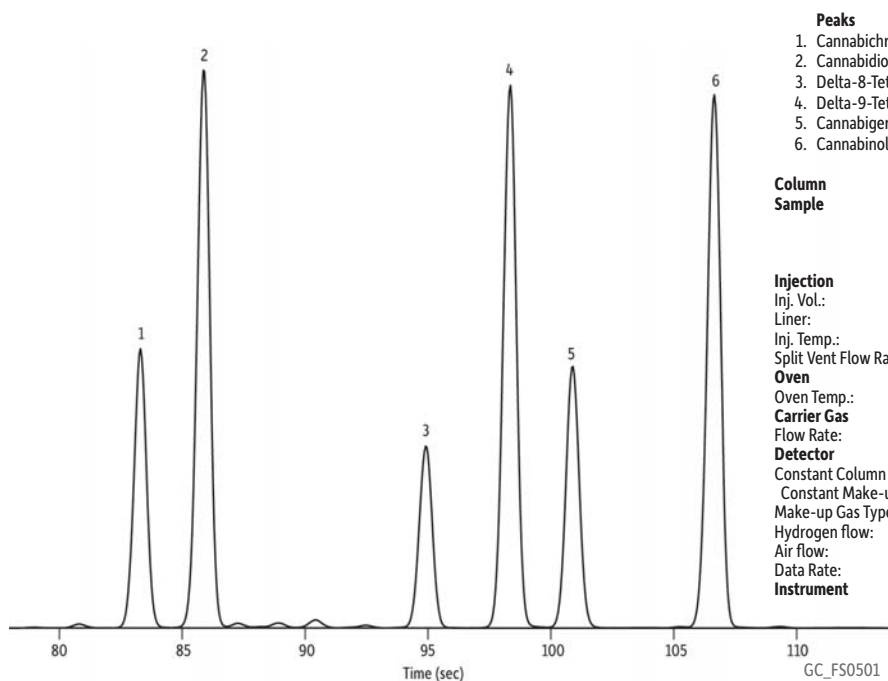
(midpolarity Crossbond® phase)

- Special selectivity and excellent inertness for substituted polar compounds, such as drugs, pesticides, herbicides, PCBs, phenols, etc.
- Provides superior separation for cannabinoids.
- Very low-bleed phase for GC-MS analysis.
- Extended temperature range: 50 °C to 340/360 °C.

ID	df	temp. limits*	15-Meter cat.#	30-Meter cat.#
0.25 mm	0.25 µm	50 to 340/360 °C	13820	13823
	0.50 µm	50 to 340/360 °C	13835	13838
	1.00 µm	50 to 320/340 °C	13850	13853
0.32 mm	0.25 µm	50 to 340/360 °C	13821	13824
	0.50 µm	50 to 340/360 °C	13836	13839
	1.00 µm	50 to 320/340 °C	13851	13854
0.53 mm	0.50 µm	50 to 340/360 °C	13837	13840
	1.00 µm	50 to 325/340 °C	13852	13855
	1.50 µm	50 to 310/330 °C	13856	13857
	3.00 µm	50 to 280/300 °C	13858	13859

*Maximum temperatures listed are for shorter length columns. Longer columns may have a different maximum temperature.

Cannabinoids on Rxi®-35Sil MS Using Hydrogen Carrier Gas by GC-FID



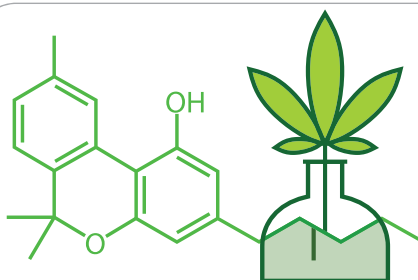
Column Rxi®-35Sil MS, 15 m, 0.25 mm ID, 0.25 µm (cat.# 13820)
Sample Cannabinoids standard (cat.# 34014)
 Cannabichromene (cat.# 34092)
 delta-8-Tetrahydrocannabinol (THC) (cat.# 34090)
 Cannabigerol (cat.# 34091)

Injection
 Inj. Vol.: 1 µL split (split ratio 50:1)
 Liner: Sky® 4 mm Precision® liner w/wool (cat.# 23305.5)
 Inj. Temp.: 250 °C
 Split Vent Flow Rate: 125 mL/min

Oven
 Oven Temp.: 225 °C (hold 0.1 min) to 330 °C at 35 °C/min (hold 0.9 min)

Carrier Gas
 Flow Rate: 2.5 mL/min

Detector
 Constant Column +
 Constant Make-up: 50 mL/min
 Make-up Gas Type: N₂
 Hydrogen flow: 4.0 mL/min
 Air flow: 450 mL/min
 Data Rate: 20 Hz
Instrument Agilent/HP6890 GC



Growing Analytical Solutions for Medical Cannabis Labs

PRODUCTS AND EXPERTISE FOR ACCURATE, RELIABLE RESULTS EVERY TIME

www.restek.com/cannabis