

Rxi®-1ms Columns (fused silica)

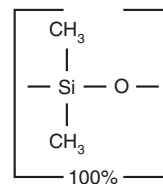
(nonpolar phase; Crossbond® dimethyl polysiloxane)

- General-purpose columns for arson accelerants, essential oils, hydrocarbons, pesticides, PCB congeners (e.g., Aroclor mixes), sulfur compounds, amines, solvent impurities, simulated distillation, oxygenates, gasoline range organics (GRO), refinery gases.
- Tested and guaranteed for ultra-low bleed; improved signal-to-noise ratio for better sensitivity and mass spectral integrity.
- Temperature range: -60 °C to 330/350 °C.
- Equivalent to USP G1, G2, and G38 phases.

ID	df	temp. limits	15-Meter cat.#	30-Meter cat.#	60-Meter cat.#
0.25 mm	0.25 µm	-60 to 330/350 °C	13320	13323	13326
	0.50 µm	-60 to 330/350 °C	13335	13338	13341
	1.00 µm	-60 to 330/350 °C	13350	13353	13356
0.32 mm	0.25 µm	-60 to 330/350 °C	13321	13324	13327
	0.50 µm	-60 to 330/350 °C	13336	13339	13342
	1.00 µm	-60 to 330/350 °C		13354	13357
0.53 mm	0.50 µm	-60 to 330/350 °C	13337	13340	
	1.00 µm	-60 to 330/350 °C	13352	13355	
	1.50 µm	-60 to 330/350 °C	13367	13370	13373

ID	df	temp. limits	10-Meter cat.#	12-Meter cat.#	20-Meter cat.#	25-Meter cat.#	50-Meter cat.#
0.15 mm	0.15 µm	-60 to 330/350 °C	43800		43801		
	2.0 µm	-60 to 330/350 °C			43802		
0.18 mm	0.18 µm	-60 to 330/350 °C			13302		
	0.36 µm	-60 to 330/350 °C			13311		
0.20 mm	0.33 µm	-60 to 330/350 °C		13397		13398	13399

Rxi®-1ms Structure



Similar to: (100%-methyl)-polysiloxane

similar phases

HP-1ms, HP-1msUI, DB-1ms, DB-1msUI, Ultra-1, VF-1ms, ZB-1, ZB-1ms

free literature

Why Derivatize?
Improve GC Separations
with Derivatization

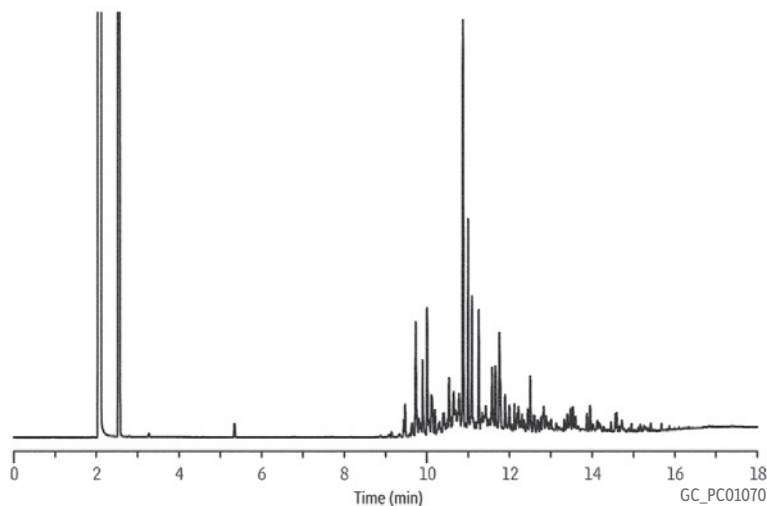
Download your
free copy from

www.restek.com

lit. cat.#
CFTS1269



99% Weathered Unleaded Gasoline on Rxi®-1ms



Column Rxi®-1ms, 30 m, 0.25 mm ID, 0.25 µm (cat.# 13323)
Sample Unleaded gasoline: 99% weathered (cat.# 30436)
Diluent: Methanol
Conc.: 5,000 µg/mL
Injection
Inj. Vol.: 1.0 µL split (split ratio 20:1)
Liner: Splitless taper (4 mm) w/wool (cat.# 22405)
Inj. Temp.: 250 °C
Oven
Oven Temp.: 50 °C (hold 2 min) to 75 °C at 10 °C/min to 300 °C at 20 °C/min (hold 5 min)
Carrier Gas He, constant flow
Linear Velocity: 28 cm/sec
Detector FID @ 300 °C