

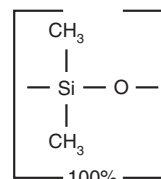
Rxi®-1HT Columns (fused silica)

(nonpolar phase; dimethyl polysiloxane)

- 40% longer lifetime from specially designed fused silica tubing.
- Columns processed for high-temperature applications, such as high molecular weight hydrocarbons.
- Temperature range: -60 to 400 °C.

ID	df	temp. limits	15-Meter cat.#	30-Meter cat.#
0.25 mm	0.10 µm	-60 to 400 °C	13950	13951
	0.25 µm	-60 to 400 °C		13952
0.32 mm	0.10 µm	-60 to 400 °C	13953	13954
	0.25 µm	-60 to 400 °C		13955

Rxi®-1HT Structure

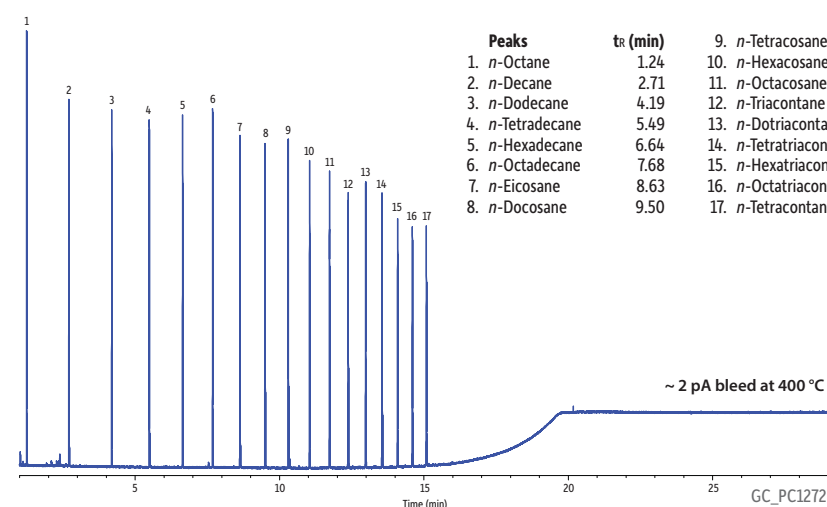


Similar to: (100%-methyl)-polysiloxane

similar phases

DB-1ht, ZB-1HTinferno

Florida TRPH Standard Mix on Rxi®-1HT



Column Rxi®-1HT, 15 m, 0.25 mm ID, 0.10 µm (cat.# 13950)
Sample Florida TRPH standard (cat.# 31266)
Diluent: Hexane
Conc.: 50 ppm (1.25 ng on-column)
Injection
Inj. Vol.: 1.0 µL split (split ratio 40:1)
Liner: Sky® 4.0 mm ID Precision® inlet liner w/ wool (cat.# 23305.1)
Inj. Temp.: 275 °C
Oven
Oven Temp.: 40 °C (hold 1.0 min) to 400 °C at 20 °C/min (hold 10 min)
Carrier Gas He, constant flow
Linear Velocity: 55 cm/sec
Detector FID @ 400 °C
Make-up Gas
Flow Rate: 45 mL/min
Make-up Gas Type: N₂
Hydrogen flow: 40 mL/min
Air flow: 450 mL/min
Data Rate: 50 Hz
Instrument Agilent/HP6890 GC

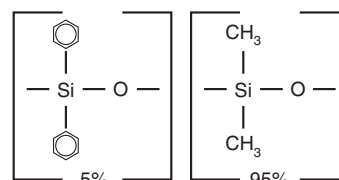
Rxi®-5HT Columns (fused silica)

(low-polarity phase; diphenyl dimethyl polysiloxane)

- 40% longer lifetime from specially designed fused silica tubing.
- Columns processed for high-temperature applications, such as mineral oil.
- Temperature range: -60 to 400 °C.

ID	df	temp. limits	15-Meter cat.#	30-Meter cat.#
0.25 mm	0.10 µm	-60 to 400 °C	13905	13908
	0.25 µm	-60 to 400 °C		13923
0.32 mm	0.10 µm	-60 to 400 °C	13906	13909
	0.25 µm	-60 to 400 °C		13924
0.53 mm	0.15 µm	-60 to 380/400 °C		13910

Rxi®-5HT Structure

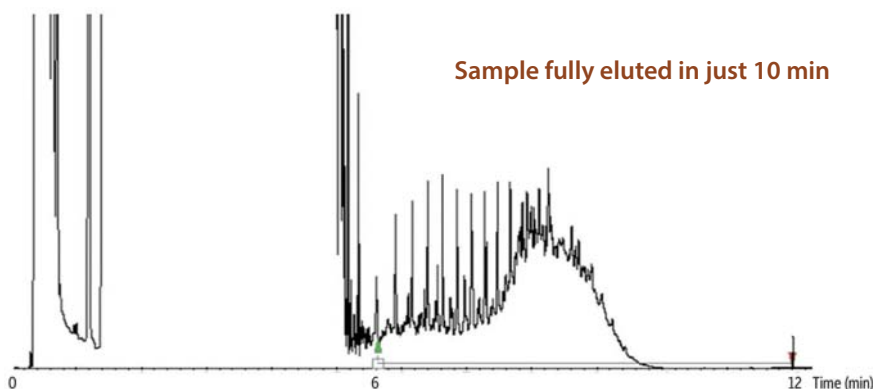


Similar to: (5%-phenyl)-methylpolysiloxane

similar phases

DB-5ht, VF-5ht, ZB-5HTinferno

Mineral Oil on Rxi®-5HT by EN9377-2 (PTV large volume injection)



Column Rxi®-5HT, 15 m, 0.32 mm ID, 0.10 µm (cat.# 13906)
Sample Mineral oil
Diluent: Hexane
Conc.: 25 ppm
Injection
Inj. Vol.: 100 µL ptv splitless
Inlet Temp. Program: 45 °C (hold 0.45 min) to 350 °C at 200 °C/min (hold 10 min)
Oven
Oven Temp.: 35 °C (hold 4 min) to 150 °C at 60 °C/min to 250 °C at 50 °C/min to 350 °C at 30 °C/min
Carrier Gas He, constant flow
Flow Rate: 2 mL/min
Detector FID @ 360 °C
Instrument Varian 450
Acknowledgement Ambiente Analisi S.r.L, Italy