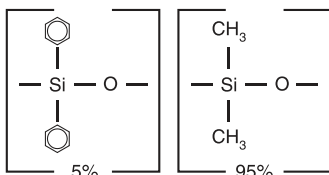


Rtx®-5MS Structure



similar phases

DB-5, HP-5, HP-5MS, Ultra-2, SPB-5, CP-Sil 8 CB, ZB-5

Rtx®-5MS—Low-Bleed GC-MS Columns (fused silica)

(low-polarity phase; Crossbond® diphenyl dimethyl polysiloxane)

- General purpose columns for drugs, solvent impurities, pesticides, hydrocarbons, PCB congeners (e.g., Aroclor mixes), essential oils, semivolatiles.
- Column specifically tested for low-bleed performance.
- Temperature range: -60 °C to 350 °C.
- Equivalent to USP G27 and G36 phases.

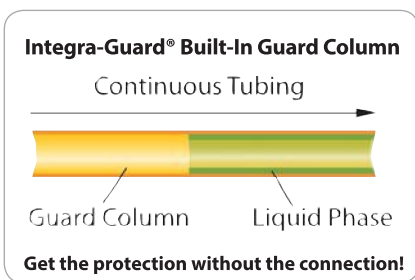
ID	df	temp. limits	15-Meter cat.#	30-Meter cat.#	60-Meter cat.#
0.25 mm	0.10 µm	-60 to 330/350 °C	12605	12608	12611
	0.25 µm	-60 to 330/350 °C	12620	12623	12626
	0.50 µm	-60 to 330/350 °C	12635	12638	12641
	1.00 µm	-60 to 325/350 °C	12650	12653	
0.32 mm	0.10 µm	-60 to 330/350 °C	12606	12609	
	0.25 µm	-60 to 330/350 °C	12621	12624	12627
	0.50 µm	-60 to 330/350 °C		12639	12642
	1.00 µm	-60 to 325/350 °C		12654	
0.53 mm	0.50 µm	-60 to 320/340 °C	12637	12640	
	1.00 µm	-60 to 320/340 °C	12652	12655	
	1.50 µm	-60 to 310/330 °C	12667	12670	

Note: The DB-5MS is a silarylene-based polymer equivalent to the Rxi-5Sil MS.

*Maximum temperatures listed are for shorter length columns. Longer columns may have a different maximum temperature.

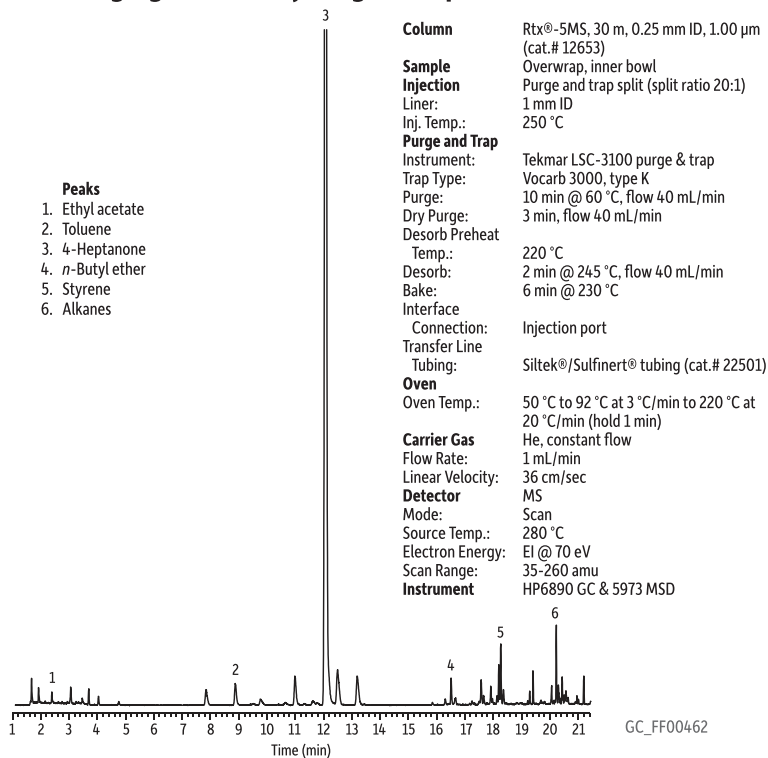
Rtx®-5MS with Integra-Guard® Columns

Description	qty.	cat.#
15 m, 0.25 mm ID, 0.25 µm Rtx-5MS w/5 m Integra-Guard Column	ea.	12620-124
15 m, 0.25 mm ID, 0.50 µm Rtx-5MS w/10 m Integra-Guard Column	ea.	12635-127
30 m, 0.25 mm ID, 0.10 µm Rtx-5MS w/5 m Integra-Guard Column	ea.	12608-124
30 m, 0.25 mm ID, 0.25 µm Rtx-5MS w/5 m Integra-Guard Column	ea.	12623-124
30 m, 0.25 mm ID, 0.25 µm Rtx-5MS w/10 m Integra-Guard Column	ea.	12623-127
30 m, 0.25 mm ID, 0.50 µm Rtx-5MS w/5 m Integra-Guard Column	ea.	12638-124
30 m, 0.25 mm ID, 0.50 µm Rtx-5MS w/10 m Integra-Guard Column	ea.	12638-127
30 m, 0.32 mm ID, 0.25 µm Rtx-5MS w/5 m Integra-Guard Column	ea.	12624-125
30 m, 0.32 mm ID, 1.00 µm Rtx-5MS w/5 m Integra-Guard Column	ea.	12654-125



We carefully manage inventory so we have what you need when you need it.

Food Packaging Volatiles by Purge & Trap GC-MS on Rtx®-5MS



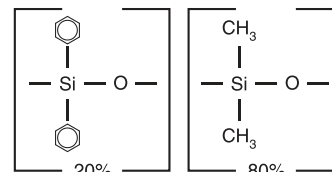
Rtx®-20 Columns (fused silica)

(low- to midpolarity phase; Crossbond® diphenyl dimethyl polysiloxane)

- General-purpose columns for volatile compounds, flavor compounds, alcoholic beverages.
- Temperature range: -20 °C to 320 °C.
- Equivalent to USP G28, G32 phases.

Rtx®-20 polymer is synthesized to exacting standards. All residual catalysts and low molecular weight fragments are removed from the polymer, providing a tight monomodal distribution and extremely low bleed.

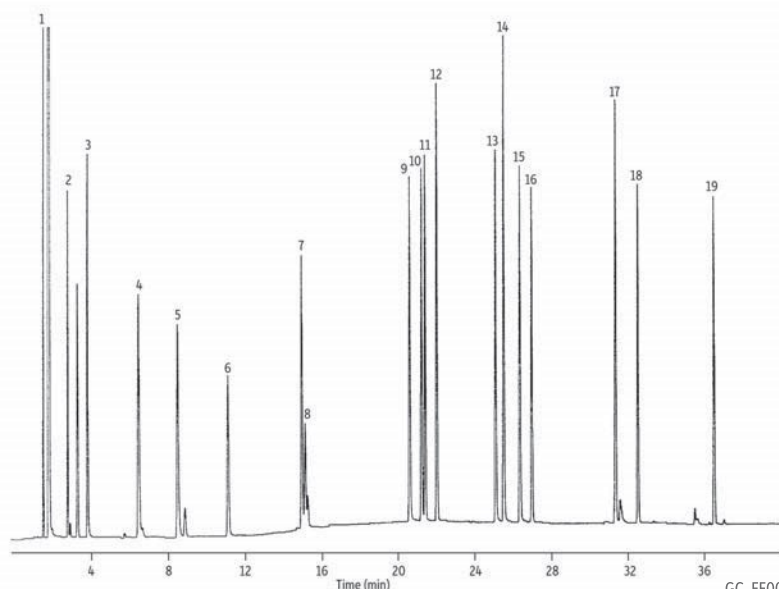
ID	df	temp. limits	30-Meter cat.#
0.25 mm	0.25 µm	-20 to 300/320 °C	10323
	0.50 µm	-20 to 290/310 °C	10338
	1.00 µm	-20 to 280/300 °C	10353
0.32 mm	0.25 µm	-20 to 300/320 °C	10324
	0.50 µm	-20 to 290/310 °C	10339
	1.00 µm	-20 to 280/300 °C	10354
0.53 mm	1.00 µm	-20 to 260/280 °C	10355

Rtx®-20 Structure

Similar to: (20%-phenyl)-methylpolysiloxane

similar phases

SPB-20, EC-20, AT-20, 007-20

Mushroom Aroma (Synthetic) on Rtx®-20

Peaks	
1. Acetone	10. 3-Octanol
2. Ethyl Acetate	11. 3-Octanone
3. 1-Butanol	12. Benzaldehyde
4. 3-Methyl-1-butanol	13. Octyl alcohol
5. 1-Pentanol	14. Benzyl Alcohol
6. Hexanal	15. Phenylacetaldehyde
7. Furfural	16. Nonanal
8. Amyl acetate	17. α-terpineol
9. 1-Octen-3-ol	18. 2,4-Nonadienal
	19. 2,4-Decadienal

Column	Rtx®-20, 30 m, 0.32 mm ID, 1.00 µm (cat.# 10354)
Sample	synthetic mushroom aroma
Conc.:	10 ng per component
Injection	
Inj. Vol.:	1.0 µL split (split ratio 100:1)
Inj. Temp.:	260 °C
Oven	
Oven Temp.:	45 °C (hold 8 min) to 250 °C at 4 °C/min
Carrier Gas	H ₂ , constant pressure
Linear Velocity:	40 cm/sec
Detector	FID @ 260 °C
Notes	FID sensitivity: 4 x 10 ⁻¹¹ AFS

Sky
Inlet Liners

True Blue Performance

Available for:

Agilent • Bruker/Varian • PerkinElmer
Shimadzu • Thermo Scientific



See pages 193–202 or visit www.restek.com/sky



RESTEK