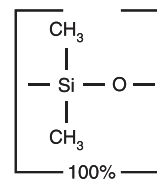


Rtx[®]-1 Columns (fused silica)(nonpolar phase; Crossbond[®] dimethyl polysiloxane)

- General-purpose columns for solvent impurities, PCB congeners (e.g., Aroclor mixes), simulated distillation, arson accelerants, gases, natural gas odorants, sulfur compounds, essential oils, hydrocarbons, semivolatiles, pesticides, oxygenates.
- Long lifetime and very low bleed at high operating temperatures.
- Temperature range: -60 °C to 350 °C.
- Equivalent to USP G1, G2, G38 phases.

Rtx[®]-1 Structure

Similar to: (100%-methyl)-polysiloxane

similar phases

HP-1, DB-1, CP-Sil 5 CB, ZB-1

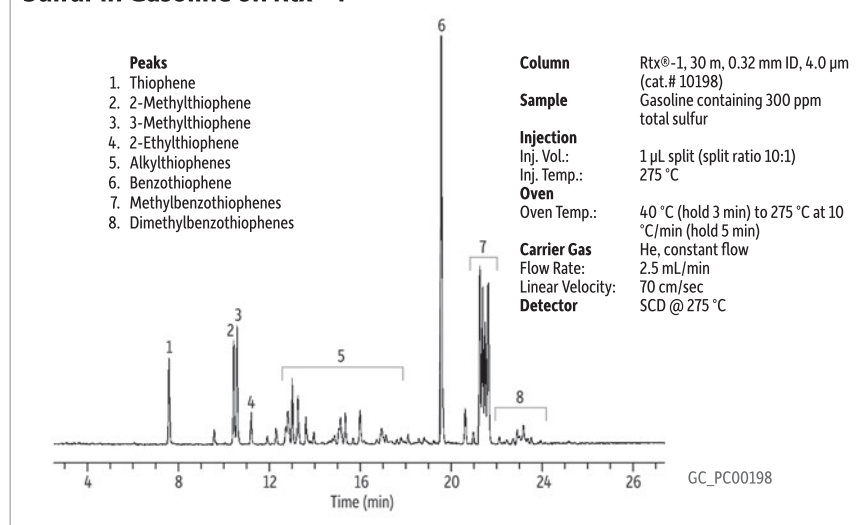
ID	df	temp. limits*	15-Meter cat.#	30-Meter cat.#	60-Meter cat.#	105-Meter cat.#
0.25 mm	0.10 μm	-60 to 330/350 °C	10105	10108	10111	
	0.25 μm	-60 to 330/350 °C	10120	10123	10126	10129
	0.50 μm	-60 to 330/350 °C	10135	10138	10141	10144
	1.00 μm	-60 to 320/340 °C	10150	10153	10156	10159
0.32 mm	0.10 μm	-60 to 330/350 °C	10106	10109	10112	
	0.25 μm	-60 to 330/350 °C	10121	10124	10127	
	0.50 μm	-60 to 330/350 °C	10136	10139	10142	
	1.00 μm	-60 to 320/340 °C	10151	10154	10157	10160
	1.50 μm	-60 to 310/330 °C	10166	10169	10172	10175
	3.00 μm	-60 to 280/300 °C	10181	10184	10187	10190
	4.00 μm	-60 to 280/300 °C		10198		
	5.00 μm	-60 to 260/280 °C	10176	10178	10180	
0.53 mm	0.10 μm	-60 to 320/340 °C	10107	10110		
	0.25 μm	-60 to 320/340 °C	10122	10125	10128	
	0.50 μm	-60 to 310/330 °C	10137	10140	10143	
	1.00 μm	-60 to 310/330 °C	10152	10155	10158	
	1.50 μm	-60 to 310/330 °C	10167	10170	10173	
	3.00 μm	-60 to 270/290 °C	10182	10185	10188	10189
	5.00 μm	-60 to 270/290 °C	10177	10179	10183	10194
	7.00 μm	-60 to 240/260 °C	10191	10192	10193	

ID	df	temp. limits	10-Meter cat.#	20-Meter cat.#	40-Meter cat.#
0.18 mm	0.20 μm	-60 to 330/350 °C	40101	40102	40103
	0.40 μm	-60 to 330/340 °C	40110	40111	40112

*Maximum temperatures listed are for shorter length columns. Longer columns may have a different maximum temperature.

Rtx[®]-1 with Integra-Guard[®] Column

Description	qty.	cat.#
30 m, 0.25 mm ID, 0.25 μm Rtx-1 w/5 m Integra-Guard Column	ea.	10123-124
30 m, 0.53 mm ID, 1.00 μm Rtx-1 w/5 m Integra-Guard Column	ea.	10155-126
30 m, 0.53 mm ID, 5.00 μm Rtx-1 w/5 m Integra-Guard Column	ea.	10179-126

Sulfur in Gasoline on Rtx[®]-1**also available****Metal MXT[®] Columns**Rugged, flexible, Siltek[®]-treated stainless steel tubing; inertness comparable to fused silica tubing.

See page 107.

free literatureAnalyze ppb Level Sulfur Compounds Using an Rt[®]-XLSulfur Micropacked GC Column or an Rtx[®]-1 Thick Film Capillary GC Column

Download your free copy from

www.restek.comlit. cat.#
PCAN1499-UNV**crossbond[®] technology**

Reduces bleed, prolongs column lifetime, and allows rejuvenation through solvent rinsing.

Fused Silica Capillary & PLOT Column Ferrule Guide

GC Column ID	Ferrule ID
0.15 mm	0.4
0.18 mm	0.4
0.25 mm	0.4
0.32 mm	0.5
0.53 mm	0.8