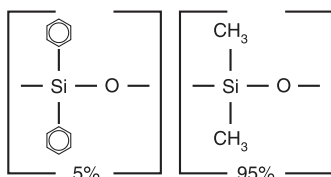


## General-Purpose Columns

## MXT®-5 Structure



Similar to: (5%-phenyl)-methylpolysiloxane

## similar phases

DB-PS5, VF-5ht UltiMetal, UAC-5, UAC-5MS

also  
availableMetal MXT®  
PLOT Columns

See page 129.



## MXT® GC Column Ferrule Guide

GC Column ID	GC Column OD	Ferrule ID
0.18 mm	0.36 ± 0.001	0.4
0.25 mm	0.41 ± 0.001	0.5
0.28 mm	0.56 ± 0.001	0.6
0.32 mm	0.44 ± 0.0015	0.5
0.53 mm	0.74 ± 0.001	0.8

## MXT®-5 Columns (Siltek®-treated stainless steel)

(low-polarity phase; Crossbond® diphenyl dimethyl polysiloxane)

- General-purpose columns for drugs, solvent impurities, pesticides, hydrocarbons, PCB congeners (e.g., Aroclor mixes), essential oils, and semivolatiles.
- Temperature range: -60 °C to 430 °C.
- Equivalent to USP G27, G36 phases.
- 4.5" standard coil diameter.

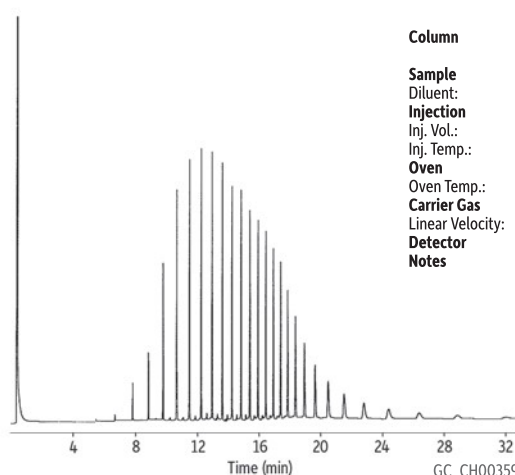
The diphenyl dimethyl polysiloxane stationary phase is the most popular GC stationary phase and is used in a wide variety of applications. All residual catalysts and low molecular weight fragments are removed from the MXT®-5 polymer, providing a tight monomodal distribution and extremely low bleed.

ID	df	temp. limits*	15-Meter cat.#	30-Meter cat.#	60-Meter cat.#
0.25 mm	0.10 µm	-60 to 330/430 °C	70205	70208	
	0.25 µm	-60 to 360/430 °C	70220	70223	70226
	0.50 µm	-60 to 330/360 °C	70235	70238	70241
	1.00 µm	-60 to 310/340 °C	70250	70253	
0.28 mm	0.25 µm	-60 to 340/430 °C	70221	70224	70227
	0.50 µm	-60 to 315/400 °C	70236	70239	
	1.00 µm	-60 to 310/360 °C	70251	70254	70257
0.53 mm	3.00 µm	-60 to 290/360 °C	70281	70284	
	0.25 µm	-60 to 340/430 °C	70222	70225	70228
	0.50 µm	-60 to 330/400 °C	70237	70240	
0.18 mm	1.00 µm	-60 to 310/360 °C	70252	70255	70258
	1.50 µm	-60 to 300/360 °C	70267	70270	
	3.00 µm	-60 to 290/360 °C	70282	70285	70288
	5.00 µm	-60 to 270/360 °C	70277	70279	70283

ID	df	temp. limits	10-Meter cat.#	20-Meter cat.#	40-Meter cat.#
0.18 mm	0.20 µm	-60 to 325/430 °C	71821	71822	71823
	0.40 µm	-60 to 315/400 °C	71824	71825	

\*Maximum temperatures listed are for shorter length columns. Longer columns may have a different maximum temperature.

## Siloxane (Polysiloxane 20) on MXT®-5



**Column** MXT®-5, 15 m, 0.28 mm ID, 0.25 µm (cat.# 70221)  
**Sample** Polysiloxane 20  
**Diluent:** Pentane  
**Injection**  
 Inj. Vol.: 1.0 µL split (split ratio 100:1)  
 Inj. Temp.: 250 °C  
**Oven**  
 Oven Temp.: 75 °C to 340 °C at 15 °C/min  
**Carrier Gas** H<sub>2</sub>, constant flow  
**Linear Velocity:** 40 cm/sec  
**Detector** FID @ 340 °C  
**Notes** FID sensitivity: 16 x 10<sup>-11</sup> AFS