



### Headspace Screw-Thread Vials (18 mm)

Description	Volume	Color	Dimensions	100-pk.	1,000-pk.
Headspace Vial	10 mL	Clear	22 x 45 mm	23084	23085
Headspace Vial	10 mL	Amber	22 x 45 mm	23088	23089
Headspace Vial	20 mL	Clear	22 x 75 mm	23082	23083
Headspace Vial	20 mL	Amber	22 x 75 mm	23086	23087

Caps not included (sold separately).



### Magnetic Screw-Thread Caps (18 mm)

Description	Septa Material	100-pk.	1,000-pk.
Magnetic Caps and Septa for SPME	Blue PTFE/Silicone, 1.5 mm thick	23090	23091
Magnetic Caps and Septa	Red PTFE/Silicone, 1.9 mm thick	23092	23093
Magnetic Caps and Septa	PTFE/Red Chlorobutyl	23094	23095

**Rxi**  
GCColumns

## 3-IN-1 TECHNOLOGY

Highest Inertness • Lowest Bleed • Exceptional Reproducibility

See **pages 24–39**.

[www.restek.com/rxi](http://www.restek.com/rxi)

**100% PURE SATISFACTION GUARANTEE**



### Headspace Crimp Vials (20 mm)

Description	Volume	Color	Dimensions	100-pk.	1,000-pk.
Headspace Vial	6 mL	Clear	22 x 38 mm	21166	21167
Headspace Vial, Flat Bottom	10 mL	Clear	23 x 46 mm	24683	24684
Headspace Vial, Rounded Bottom	10 mL	Clear	23 x 46 mm	21164	21165
Headspace Vial, Flat Bottom	20 mL	Clear	23 x 75 mm	24685	24686
Headspace Vial, Rounded Bottom	20 mL	Clear	23 x 75 mm	21162	21163
Headspace Vial	27 mL	Clear	30 x 60 mm	21160	21161

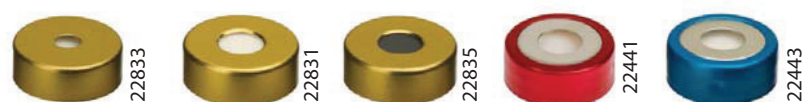
Vial-to-instrument compatibility is designated in instrument reference chart. See page 351.



### Aluminum Seals w/Septa (20 mm, preassembled)

Description	Cap Color	Septa Material	100-pk.	1,000-pk.
Seals w/Septa	Silver	PTFE/Gray Butyl Rubber	21761	21762
Seals w/Septa	Silver	PTFE/Silicone	21763	21764
Pressure Release Seals w/Septa*	Silver	PTFE/Gray Butyl Rubber	21765	21766
Pressure Release Seals w/Septa*	Silver	PTFE/Silicone	21767	21768

\*Pressure release point: 3.0 bar ± 0.5 bar



### Magnetic Seals w/Septa (20 mm, preassembled)

Description	Cap Color	Septa Material	100-pk.	1,000-pk.
Magnetic Seals w/Septa, with 5 mm Hole	Gold	PTFE/Silicone	22833	22834
Magnetic Seals w/Septa, with 8 mm Hole	Gold	PTFE/Silicone	22831	22832
Magnetic Seals w/Septa, with 8 mm Hole	Gold	PTFE/Butyl	22835	22836
BiMetal Magnetic Seals w/Septa, with 8 mm Hole	Red/Silver	PTFE/Silicone	22441	22442
BiMetal Magnetic Seals w/Septa, with 8 mm Hole	Blue/Silver	PTFE/Silicone	22443	22444

5 mm hole is compatible with the following systems: Carlo Erba HS500/HS800, CTC 500, Fisons HS500/HS800, and Bruker/Varian/Chrompack 9020/25. 8 mm hole is compatible with the Combi Pal. BiMetal magnetic seals are easier to crimp and decap than standard 20 mm magnetic seals.